

From: "Rakesh Sachdeva" <rsachdev@chemistry.ohio-state.edu>  
To: <reckhow@snail.ecs.umass.edu>  
Subject: FW: LCT data  
Date: Mon, 9 Feb 2004 12:45:17 -0500  
X-Mailer: Microsoft Outlook IMO, Build 9.0.2416 (9.0.2910.0)  
Importance: Normal  
X-Scanned-By: MIMEDefang 2.39  
X-Spam-Checker-Version: SpamAssassin 2.63 (2004-01-11) on  
franklin.ecs.umass.edu  
X-Spam-Level:  
X-Spam-Status: No, hits=0.6 required=5.0 tests=HTML\_40\_50,HTML\_FONTCOLOR\_BLUE,  
HTML\_MESSAGE autolearn=no version=2.63

Dear Dave,

I am attaching a file of the Electrospray MS done using a time of flight (TOF) mass spec of the Winnipeg samples. I have done it in positive and negative ion modes, both. I will be more than happy to provide expansions of the spectra. The samples were processed by washing the discs with 80:20 methanol / water. We have received the next set of samples as well and I will forward you the data as soon as I am done.

Rakesh.

Dr. Rakesh Sachdeva  
Hatcher Research Group  
Department of Chemistry  
The Ohio State University  
McPherson 3035,  
140 West 18th Avenue.  
Columbus, OH 43210  
Ph. : (614) 688-4353  
Fax : (614) 688-5920

-----Original Message-----

**From:** Rakesh Sachdeva [mailto:rsachdev@chemistry.ohio-state.edu]  
**Sent:** Monday, January 26, 2004 3:00 PM  
**To:** Pat Hatcher  
**Subject:** LCT data

Dear Dr. Hatcher,

I am attaching a word file containing the MS details from LCT of DBP products from UMass.  
Rakesh.

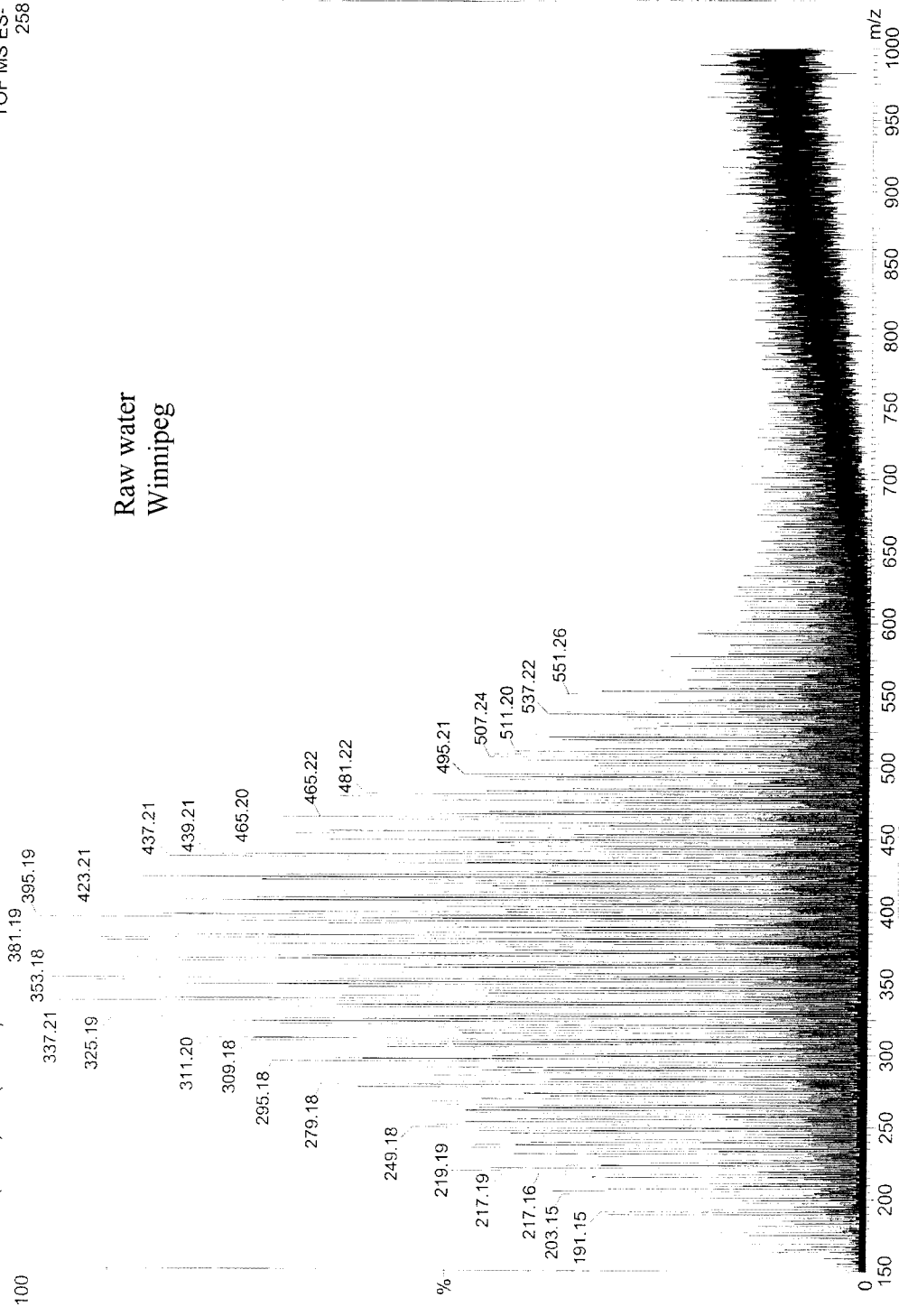
Dr. Rakesh Sachdeva  
Hatcher Research Group  
Department of Chemistry  
The Ohio State University  
McPherson 3035,  
140 West 18th Avenue.  
Columbus, OH 43210  
Ph. : (614) 688-4353  
Fax : (614) 688-5920

DR-1 -ve ion mode  
LCT Electrospray  
L011604U 54 (1.008) Cm (54:498)

Mass Spectrometry & Proteomics Facility  
(614) 292-4821

16-Jan-2004  
www.ccic.ohio-state.edu  
TOF MS ES-  
258

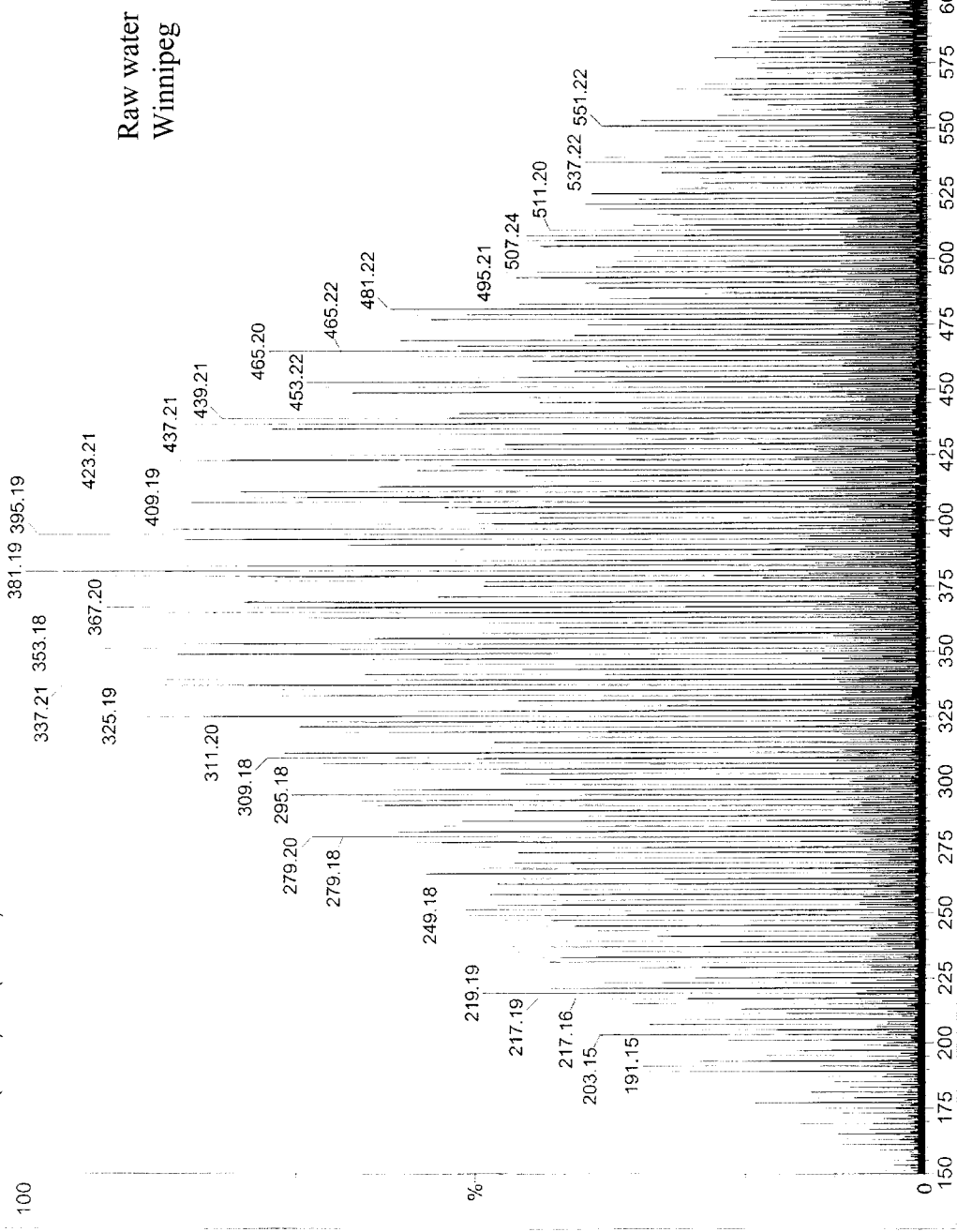
Raw water  
Winnipeg



DR-1 -ve ion mode  
LCT Electropray  
L011604u 54 (1.008) Cm (54:498)

Mass Spectrometry & Proteomics Facility  
(614) 292-4821

16-Jan-2004  
www.ccic.ohio-state.edu  
TOF MS ES-  
258

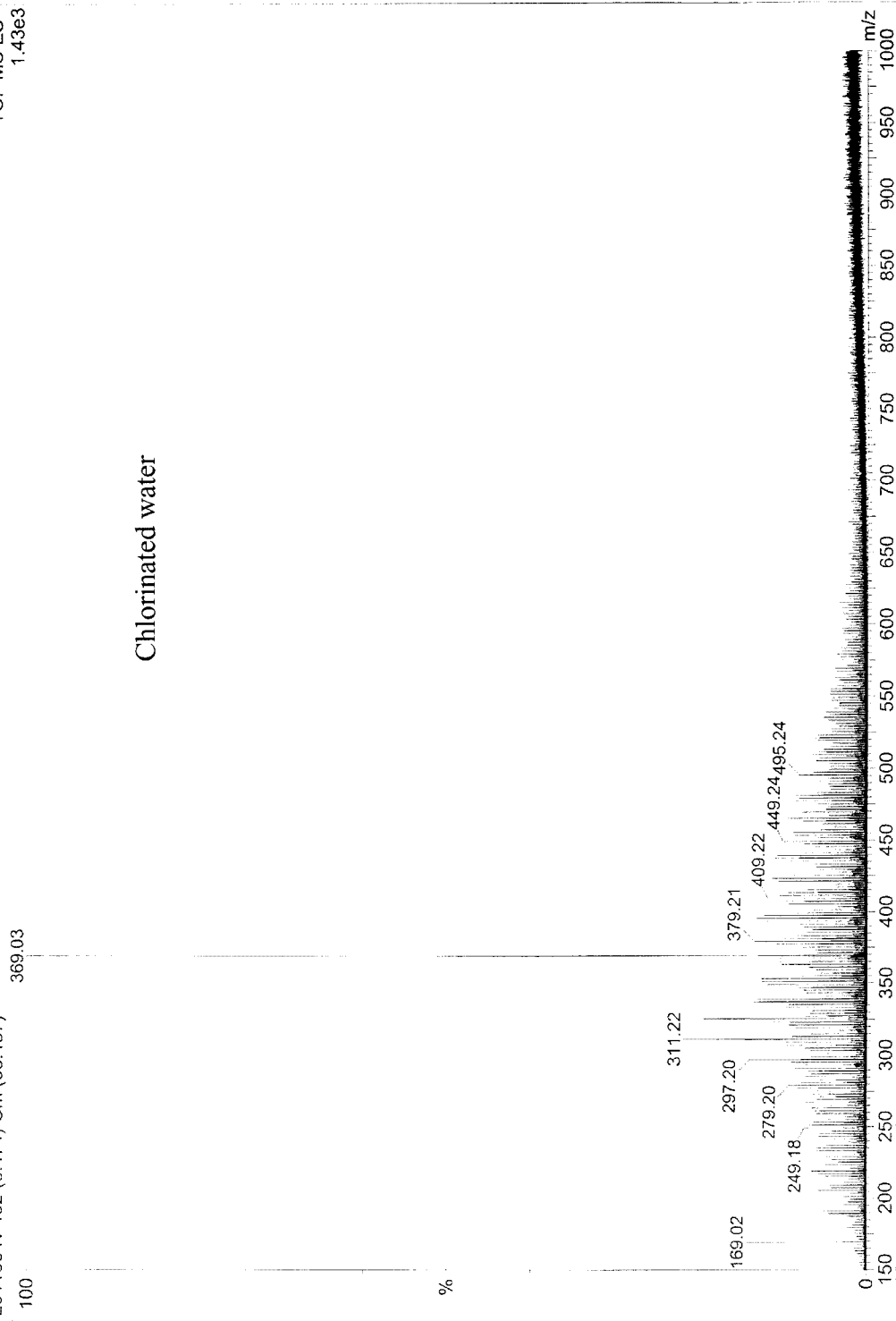


DR-2 -ve ion mode  
LCT Electrospray  
L011604v462 (8.474) Cm (93:487)

Mass Spectrometry & Proteomics Facility  
(614) 292-4821

16-Jan-2004  
www.ccic.ohio-state.edu  
TOF MS ES-  
1.43e3

Chlorinated water



DR-2 -ve ion mode  
LCT Electropray  
L011604v 462 (8.474) Cm (93:487)

Mass Spectrometry & Proteomics Facility  
(614) 292-4821

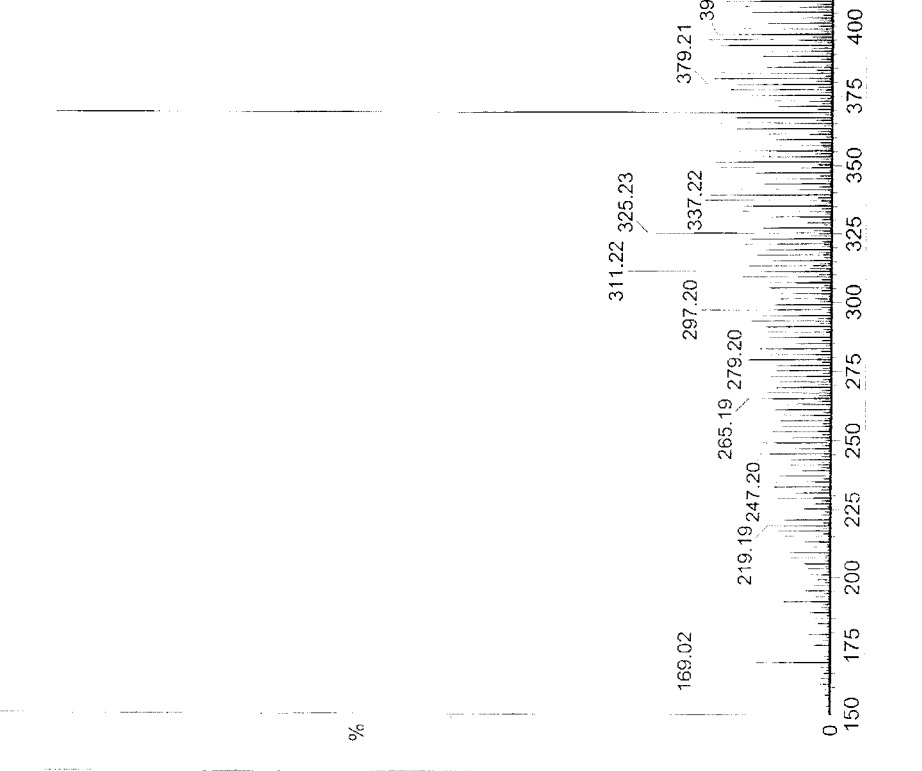
16-Jan-2004  
www.ccic.ohio-state.edu  
TOF MS ES-

1.43e3

369.03

100

Chlorinated water



DR-2 -ve ion mode

LCT Electropray

L011604v 462 (8.474) Cm (93.487)

100  $\times 4$

Mass Spectrometry & Proteomics Facility

(614) 292-4821

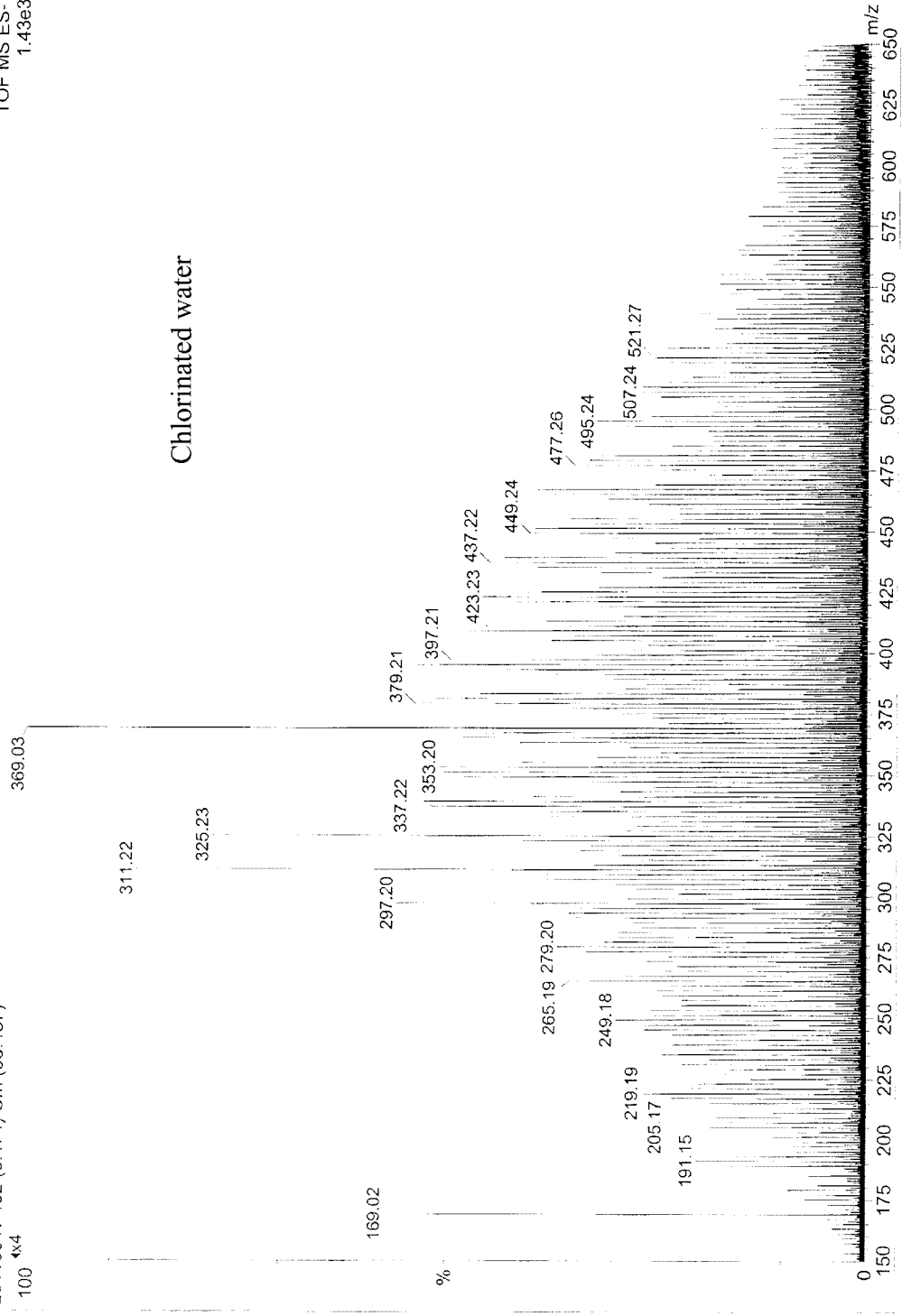
16-Jan-2004

www.ccic.ohio-state.edu

TOF MS ES-

1.43e3

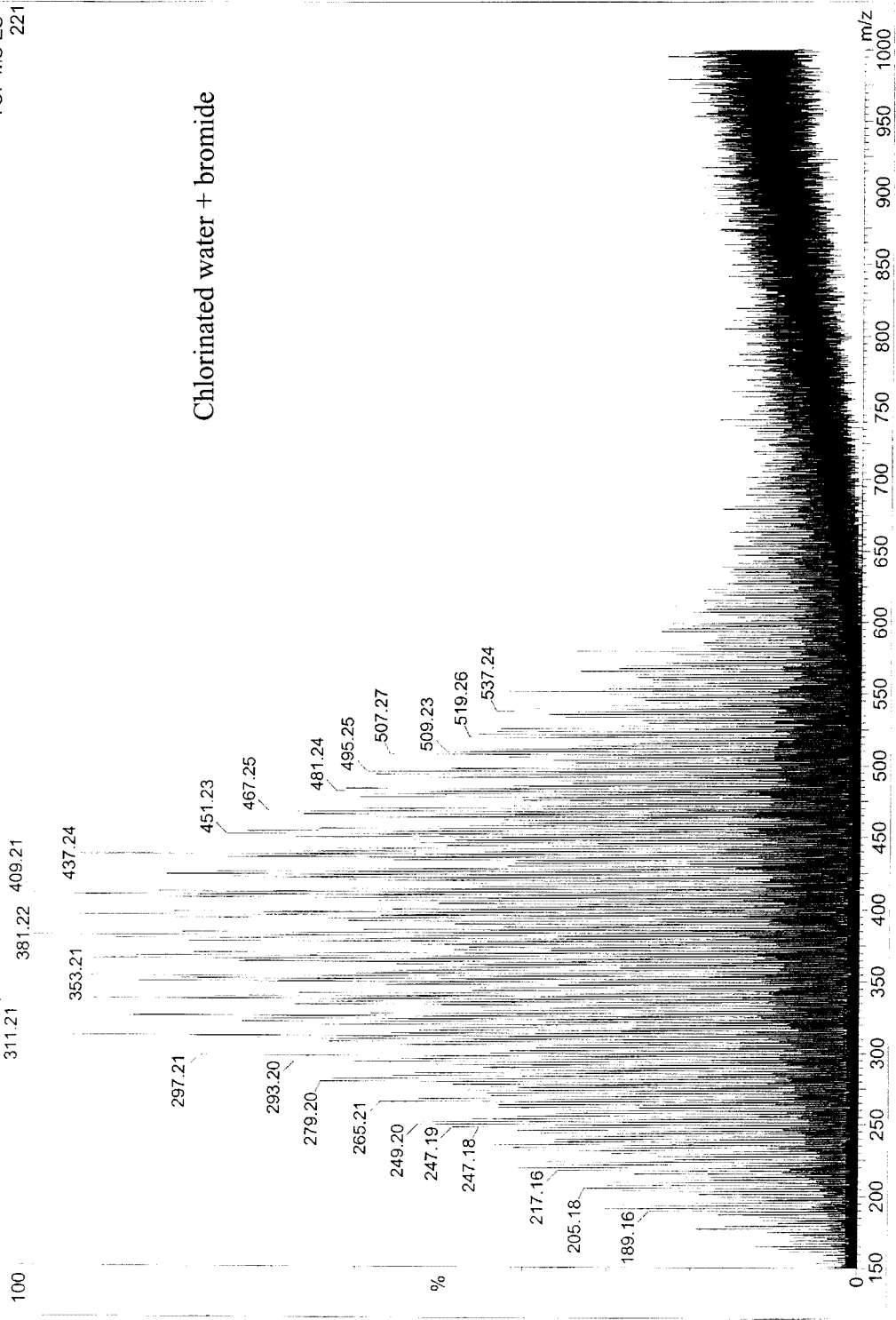
Chlorinated water



DR-3 -ve ion mode  
LCT Electropray  
L011604w 529 (9.703) Cm (105:541)

Mass Spectrometry & Proteomics Facility  
(614) 292-4821

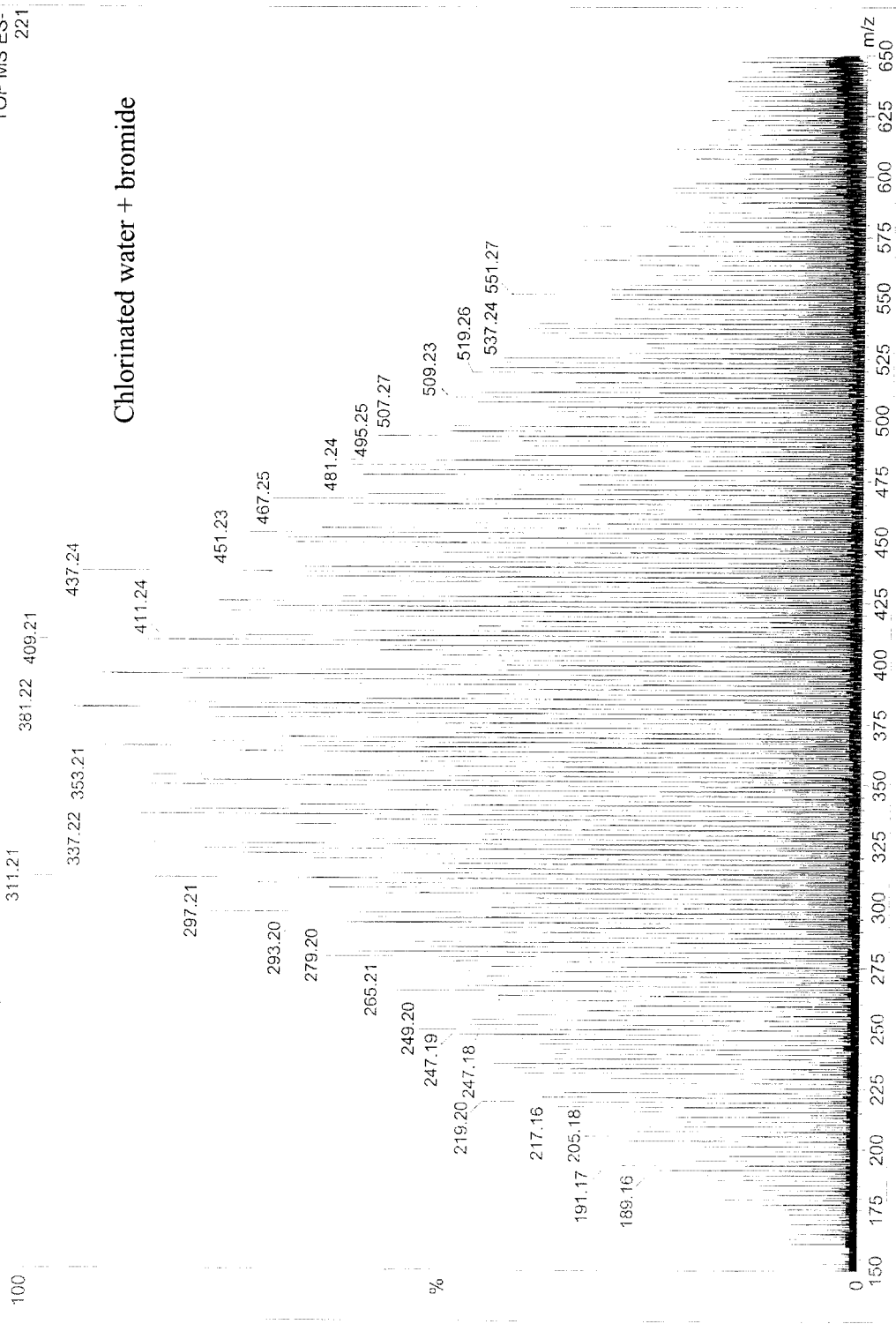
16-Jan-2004  
www.ccfc.ohio-state.edu  
TOF MS ES-  
221



DR-3 -ve ion mode  
LCT Electrospray  
L011604w 529 (9.703) Cm (105.541)

Mass Spectrometry & Proteomics Facility  
(614) 292-4821

16-Jan-2004  
www.ccic.ohio-state.edu  
TOF MS ES-  
221

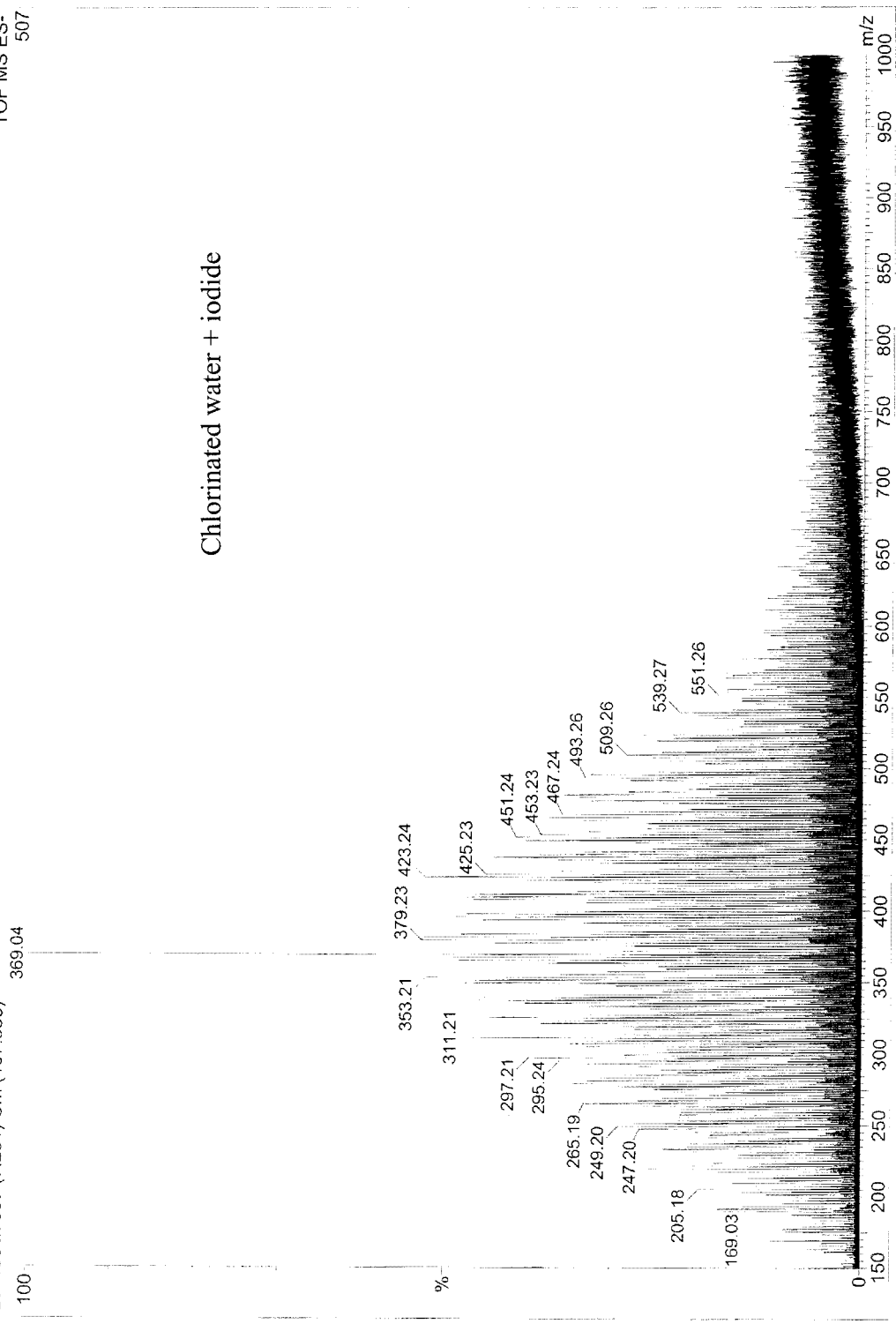




DR-4 -ve ion mode  
LCT Electrospray  
L011604x 397 (7.281) Cm (107.533)

Mass Spectrometry & Proteomics Facility  
(614) 292-4821

16-Jan-2004  
www.ccic.ohio-state.edu  
TOF MS ES-  
507



DR-4 -ve ion mode  
LCT Electropray

L011604x 397 (7.281) Cm (107:533)

100

Mass Spectrometry & Proteomics Facility

(614) 292-4821

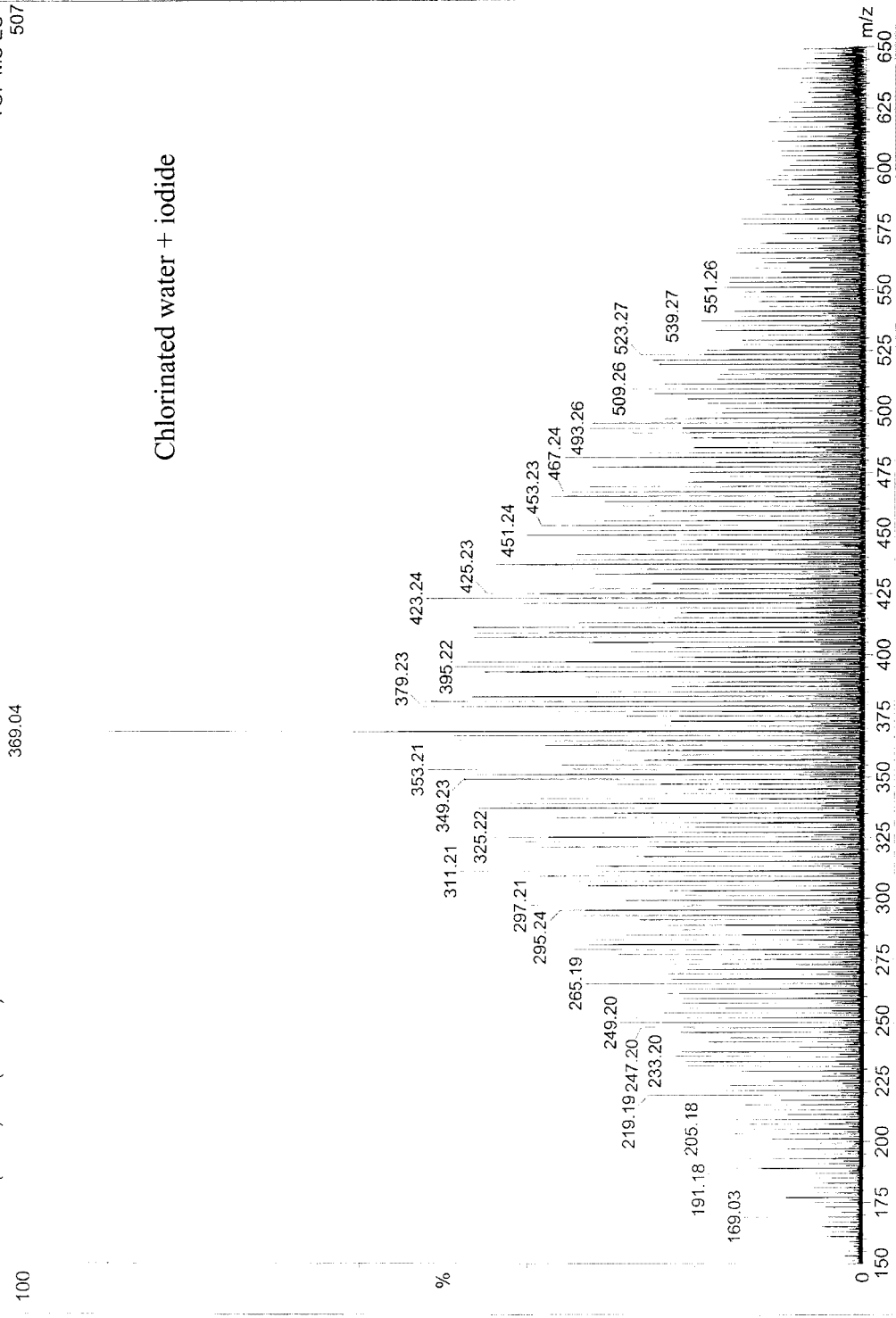
16-Jan-2004

www.ccic.ohio-state.edu

TOF MS ES-

507

Chlorinated water + iodide



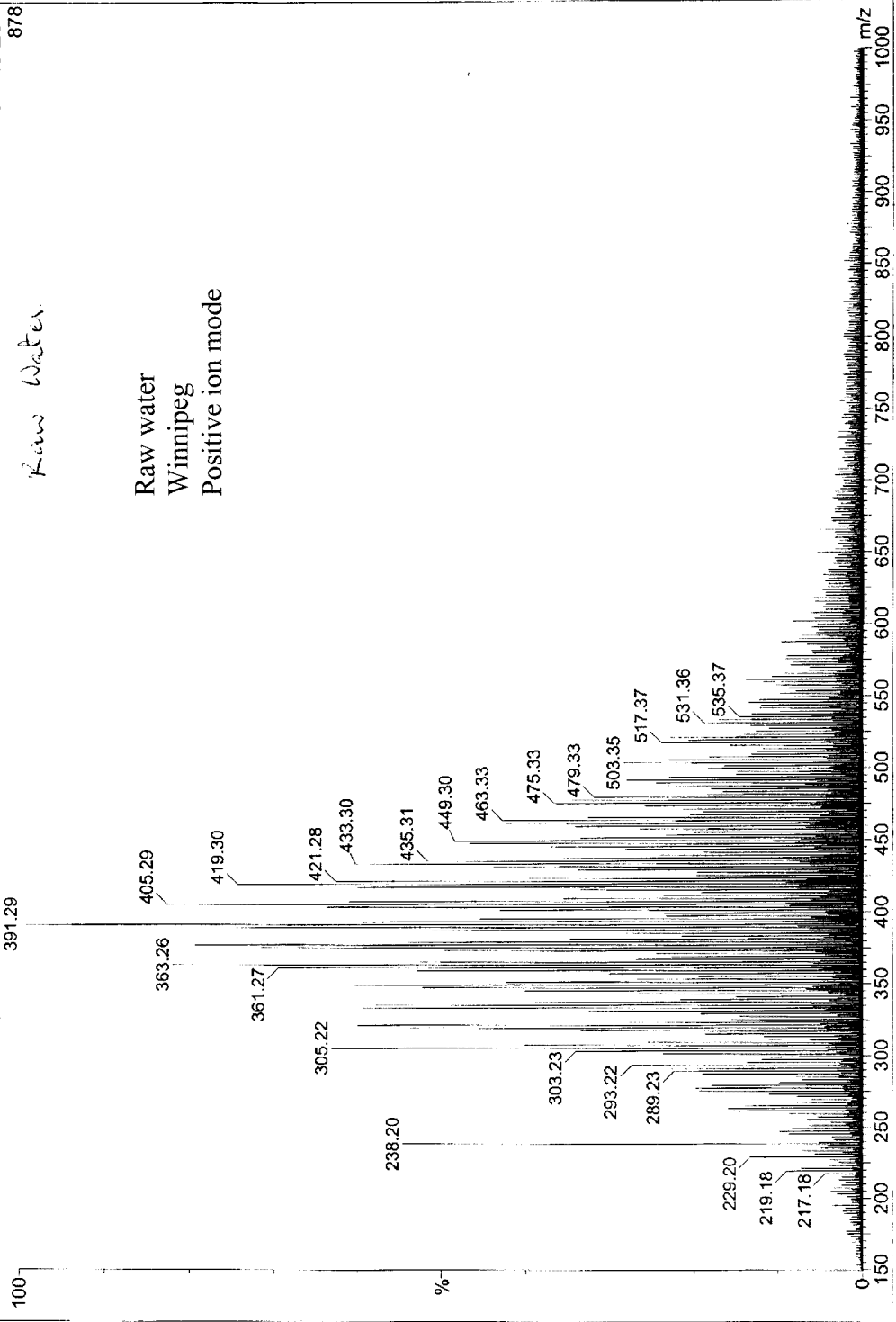
16-Jan-2004  
www.ccic.ohio-state.edu  
TOF MS ES+  
878

Mass Spectrometry & Proteomics Facility  
(614) 292-4821

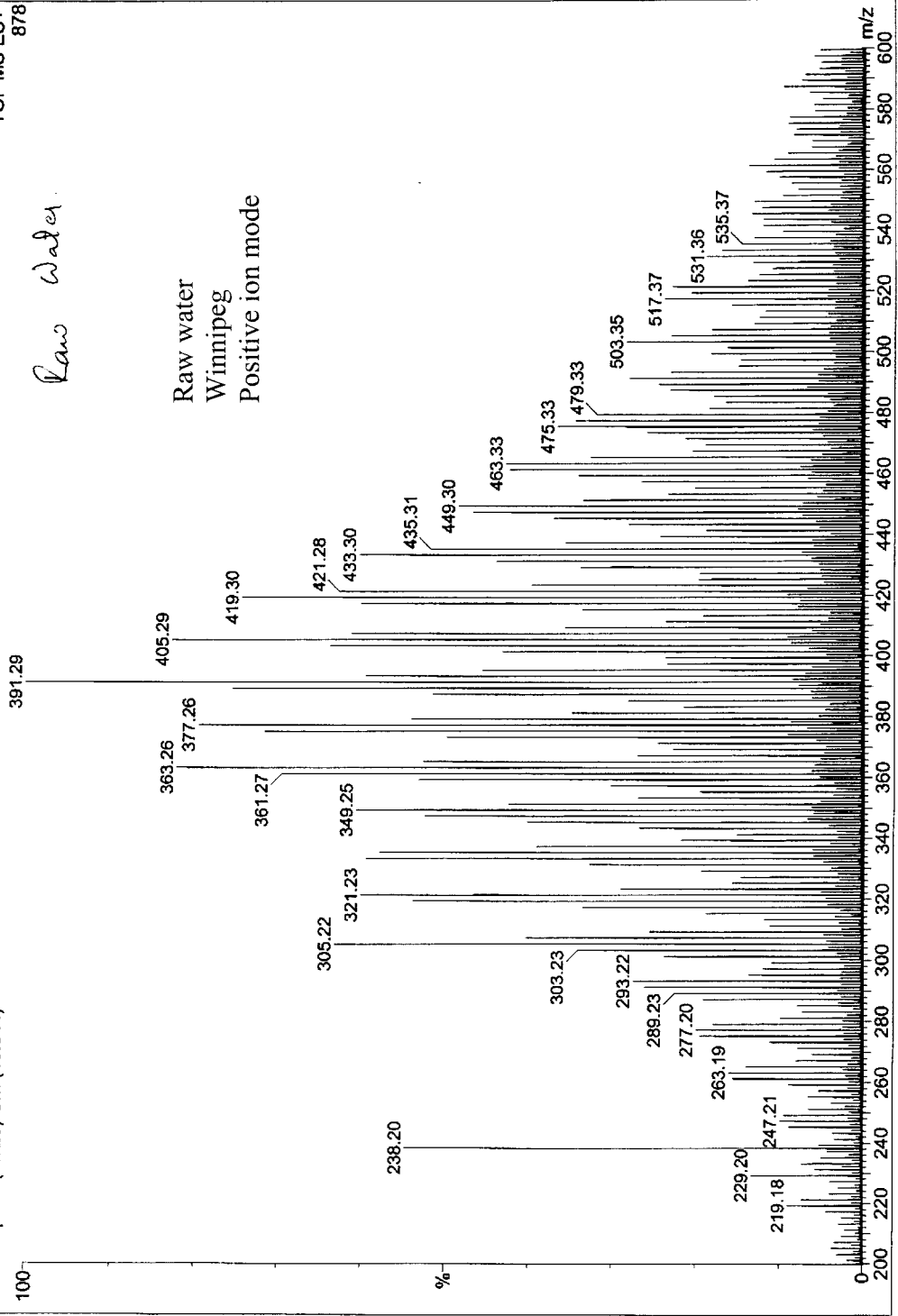
*Raw Water*

Raw water  
Winnipeg  
Positive ion mode

LCT Electrospray  
L011604q 274 (5.025) Cm (16:544)



*Raw Water*



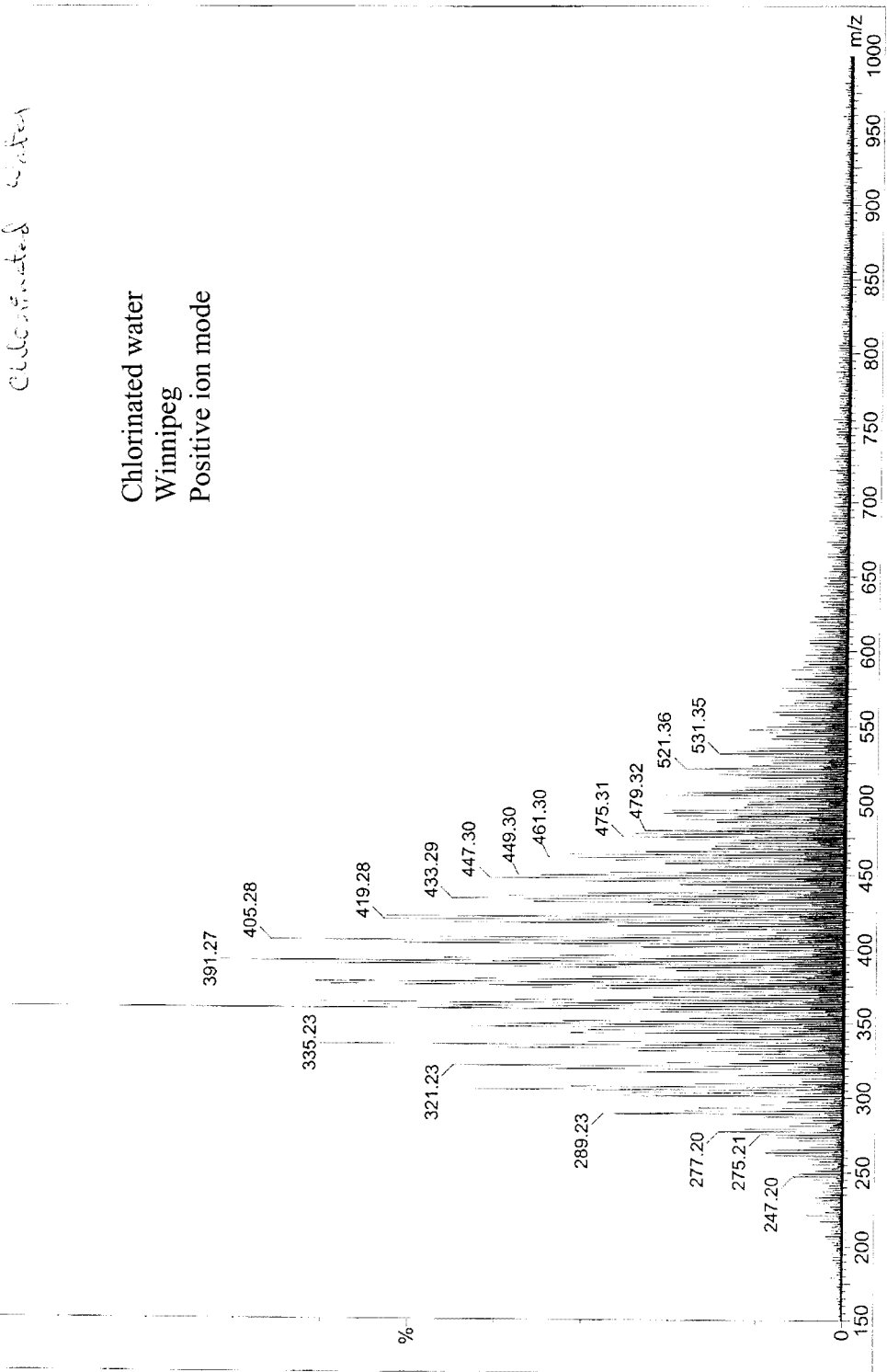
DR-2  
LCT Electrospray  
L011604r 170 (3.117) Cm (94:478)  
100  
359.33

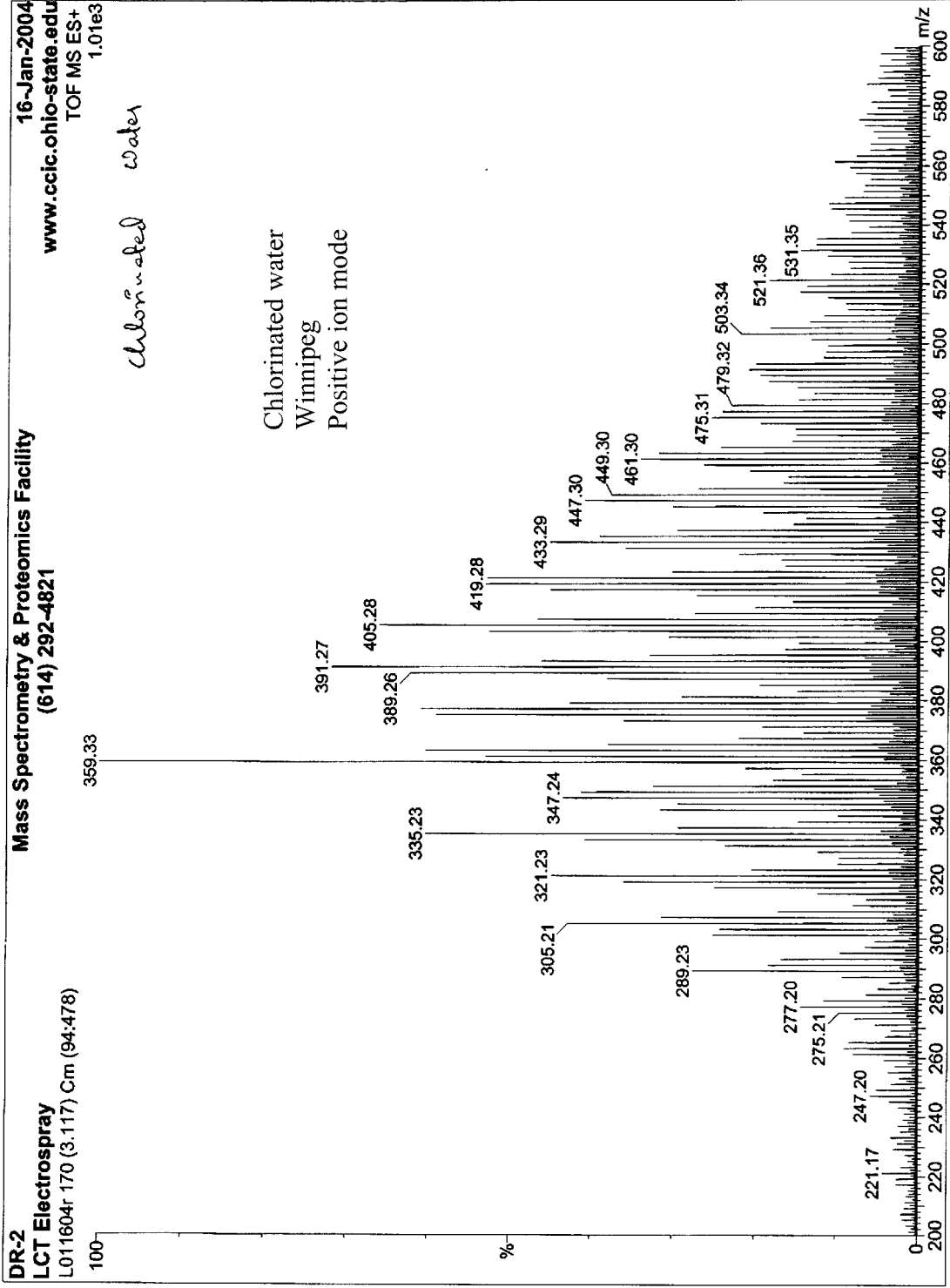
Mass Spectrometry & Proteomics Facility  
(614) 292-4821

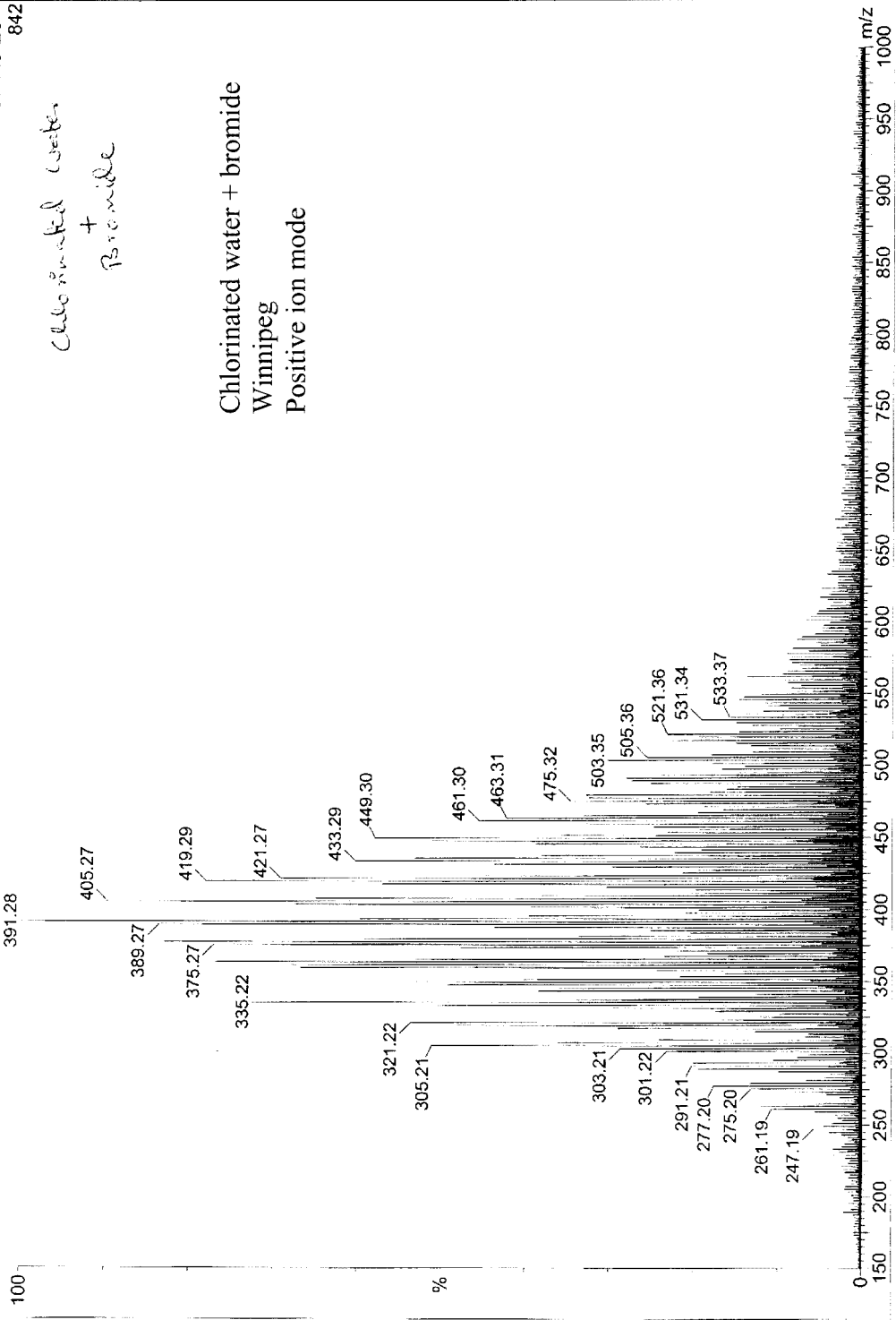
16-Jan-2004  
www.ccic.ohio-state.edu  
TOF MS ES+  
1.01e3

*Chlorinated water*

Chlorinated water  
Winnipeg  
Positive ion mode







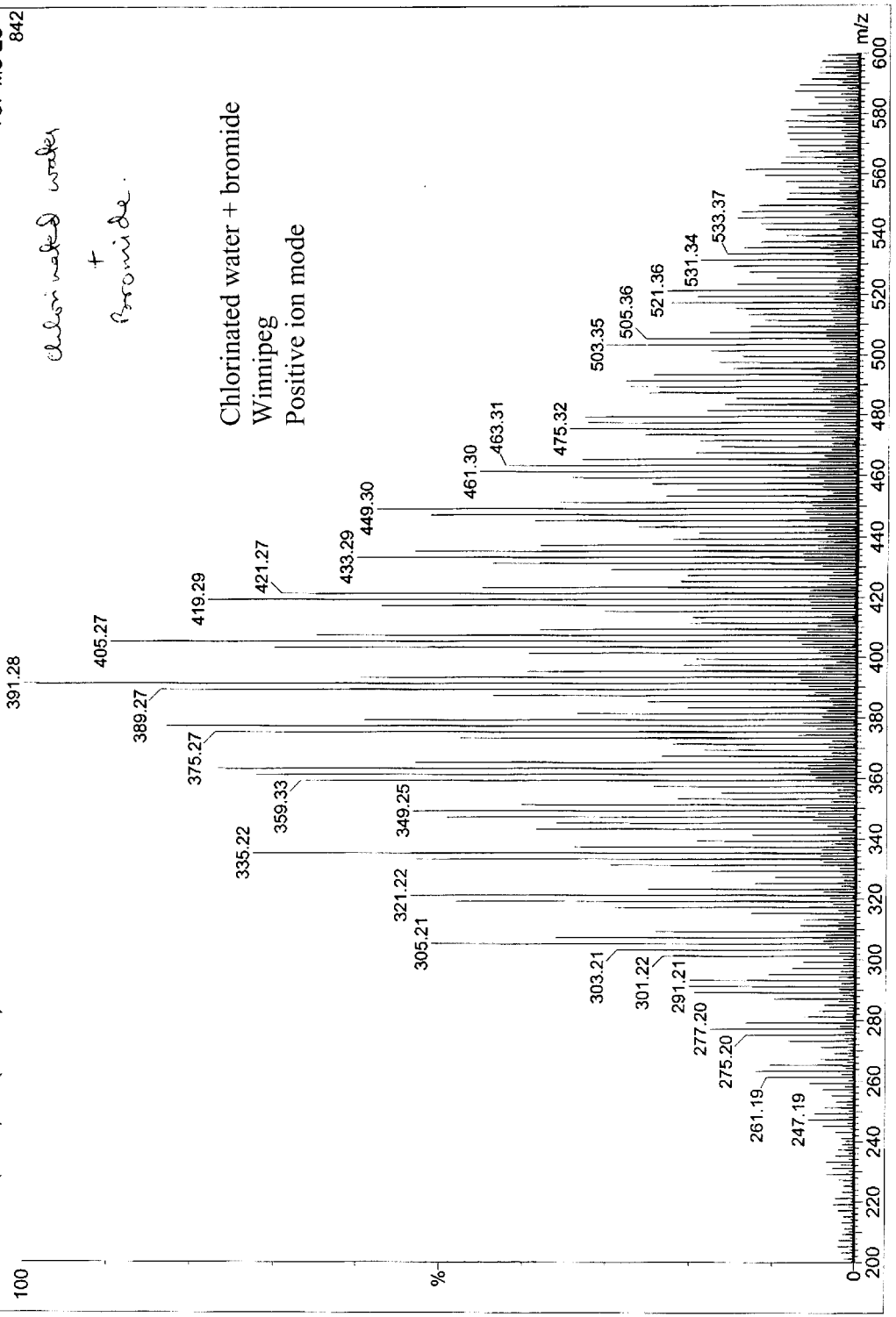
DR-3  
LCT Electrospray  
LO11604s 211 (3.869) Cm (91:488)

Mass Spectrometry & Proteomics Facility  
(614) 292-4821

16-Jan-2004  
www.ccic.ohio-state.edu  
TOF MS ES+  
842

*Chlorinated water  
+  
Bromide.*

Chlorinated water + bromide  
Winnipeg  
Positive ion mode

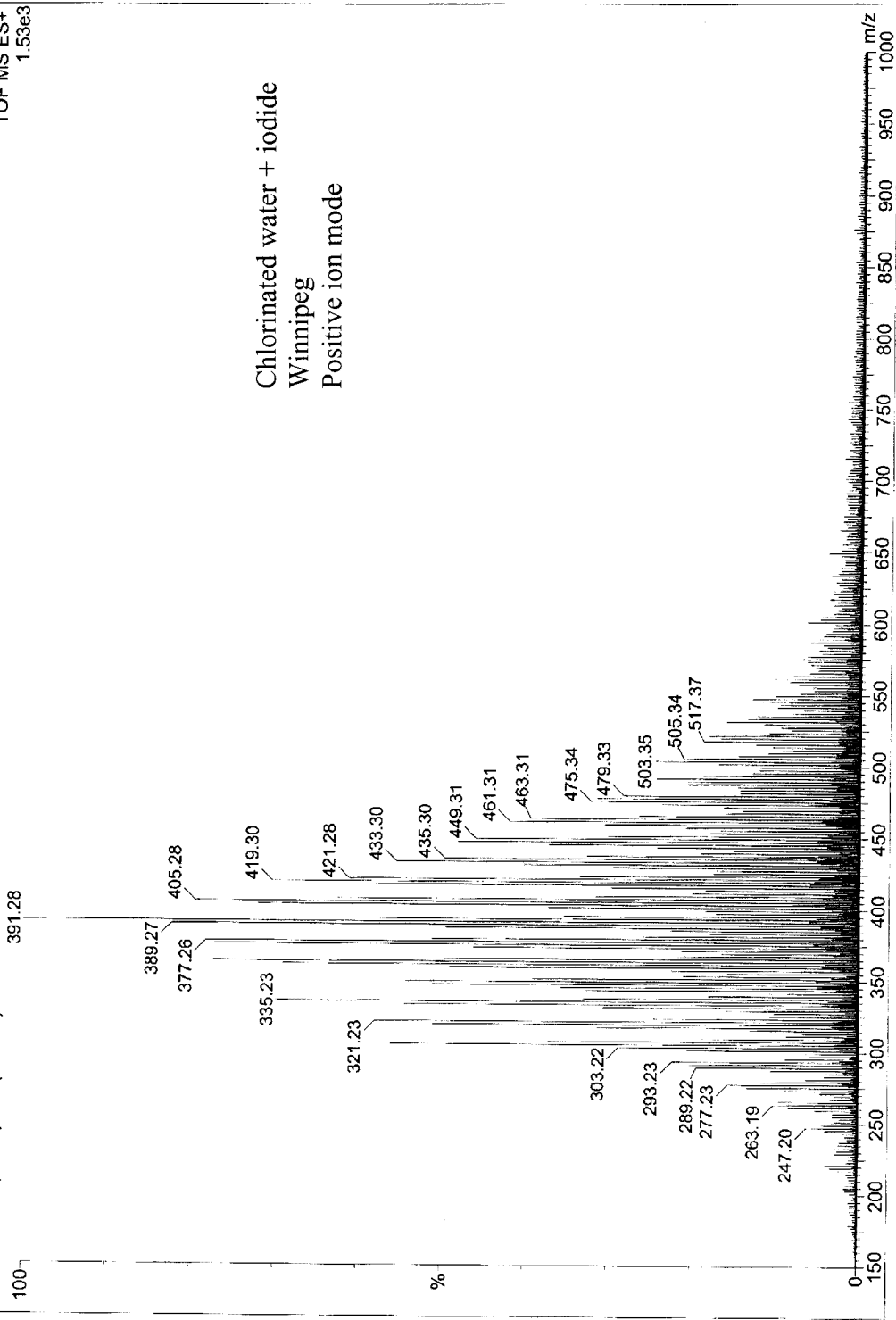




DR-4  
LCT Electrospray  
L011604I.268 (4.915) Cm (97.542)

Mass Spectrometry & Proteomics Facility  
(614) 292-4821

16-Jan-2004  
www.ccic.ohio-state.edu  
TOF MS ES+  
1.53e3



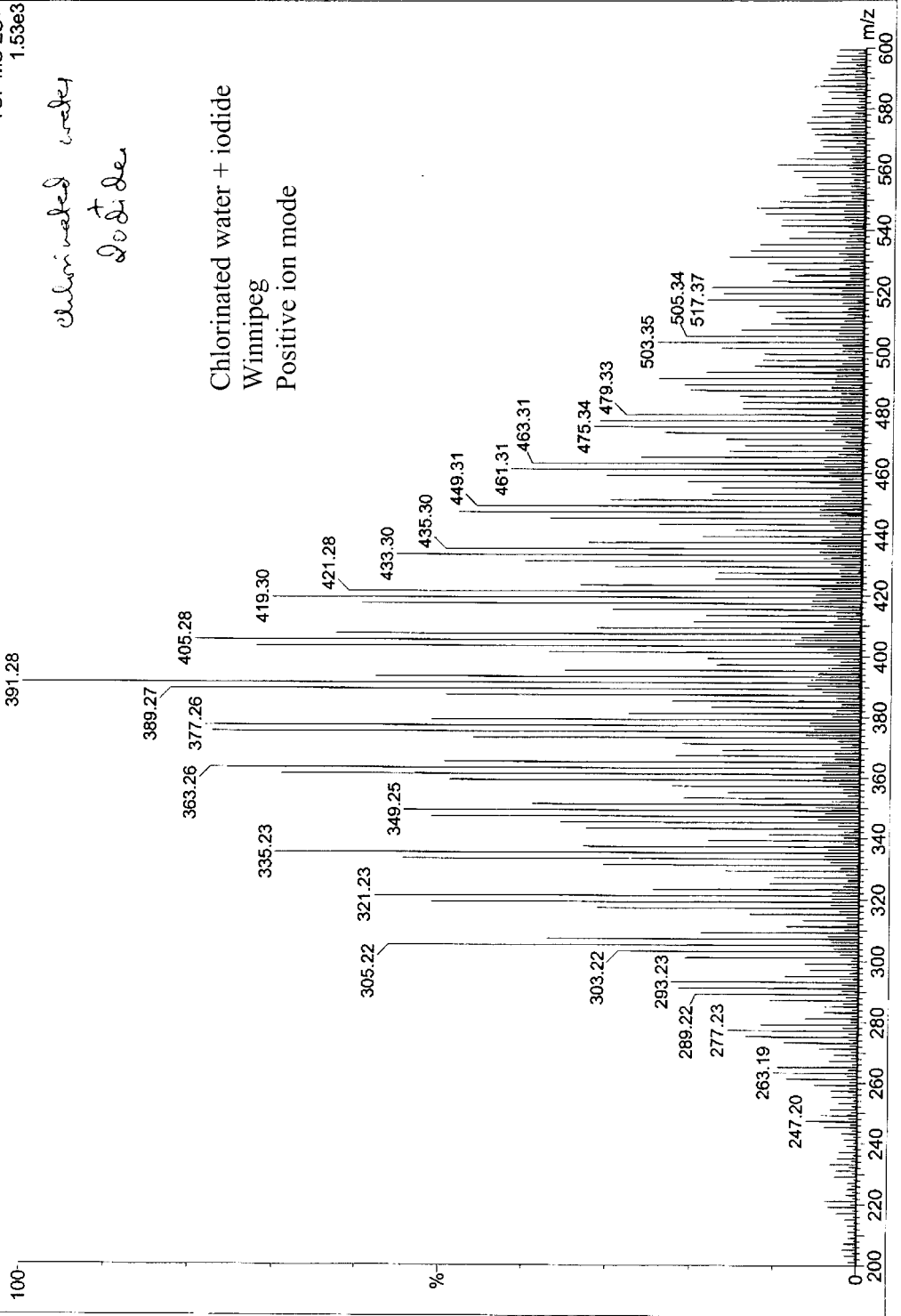
DR-4  
LCT Electrospray  
L0116041 268 (4.915) Cm (97:542)

Mass Spectrometry & Proteomics Facility  
(614) 292-4821

16-Jan-2004  
www.ccic.ohio-state.edu  
TOF MS ES+  
1.53e3

*chlorinated water  
sodium*

Chlorinated water + iodide  
Winnipeg  
Positive ion mode



X-Mailer: QUALCOMM Windows Eudora Version 5.2.1  
Date: Mon, 26 Jan 2004 15:31:38 -0500  
To: David Reckhow <reckhow@ecs.umass.edu>  
From: Pat Hatcher <hatcher@chemistry.ohio-state.edu>  
Subject: Fwd: LCT data  
X-Scanned-By: MIMEDefang 2.39

Dave,

Here are some of the early results. We have yet to really go through the data in detail. It looks really complicated but the spectral quality was very good. More later.

Pat

From: "Rakesh Sachdeva" <rsachdev@chemistry.ohio-state.edu>  
To: "Pat Hatcher" <hatcher@chemistry.ohio-state.edu>  
Subject: LCT data  
Date: Mon, 26 Jan 2004 14:59:42 -0500  
X-Mailer: Microsoft Outlook IMO, Build 9.0.2416 (9.0.2910.0)  
Importance: Normal

Dear Dr. Hatcher,  
I am attaching a word file containing the MS details from LCT of DBP products from UMass.  
Rakesh.

Dr. Rakesh Sachdeva  
Hatcher Research Group  
Department of Chemistry  
The Ohio State University  
McPherson 3035,  
140 West 18th Avenue.  
Columbus, OH 43210  
Ph. : (614) 688-4353  
Fax : (614) 688-5920

Patrick G. Hatcher  
Professor and Director of the Ohio State EMSI  
Department of Chemistry  
Newman and Wolfrom Lab  
100 West 18th Avenue  
Columbus, OH 43210  
<http://www.chemistry.ohio-state.edu/~hatcher/>  
<http://emsi.osu.edu/>  
Tel: (614) 688-8799  
Fax: (614) 688-5920